



SALES MANUAL

HYATT REGENCY NAHA, OKINAWA

★ Sales Point

✓ 01. Location

- : 20min from the Naha Int'l Airport, 3min from Kokusai-Street
- : Right On the Main Street; convenient for both tour and shopping

✓ 02. Regency Club Lounge

- : Exclusive lounge for Club & Suite room guests
- : Incomparable Service; Cocktail time & Orion Beer Server

✓ 03. Restaurants & Bar

- : All famous and loved by tourists and locals

✓ 04. International Brand Service

- : GBAC STAR™ Facility Accreditation
- : Multilingual Staff · High Standard Service

✓ 05. A variety of activities

- : Water Activities with hotel-pick up & Local Activities





Contents

★SALES POINT

01. LOCATION

02. FLOOR MAP

03. ACCOMMODATION

04. REGENCY CLUB LOUNGE

05. RESTAURANT & BAR

06. HOTEL FACILITIES

07. MEETING & BANQUET

08. ACTIVITIES

09. PRECAUTIONARY MEASURES



01. LOCATION

20min from the Naha Int'l Airport

3min from Kokusai-dori Street

Hyatt Regency Naha, Okinawa provides easy access and convenience for business and leisure travelers alike. It takes about 20 minutes by car from the Naha International Airport and an only a 3minutes walk to Kokusai-Dori street.

It takes 7minutes walk from the Makishi Station when using Yui-Rail (Monorail)



01. LOCATION

Art, Culture, and Shopping

Landmark hotel in the heart of Naha

Tsuboya Yachimun Dori (Pottery Street) – 160m

Kokusai Dori (Main Street) – 200m

Makishi Station – 500m

Tomarin Ferry Terminal – 1.5km / 9mins

Shuri Castle – 4.2km / 13mins

Okinawa Convention Center – 10km / 22mins

Okinawa Churaumi Aquarium – 89km / 1.5hr



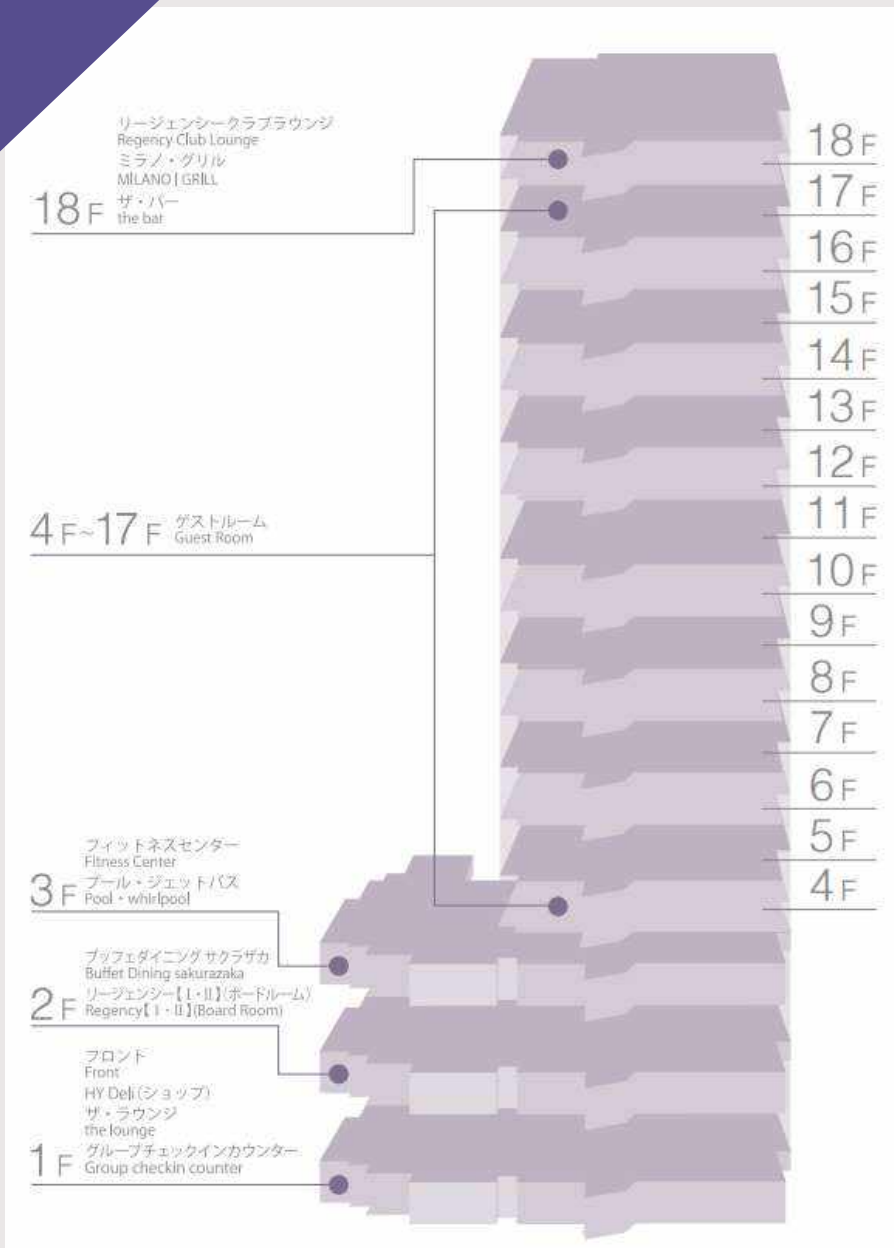
02. FLOOR MAP

Total 294 Rooms

Hyatt Regency Naha, Okinawa opened our door in July 2015. The hotel features 294 guestrooms, including 14 suite rooms.

- Check-in : 3pm Check-out : 11am

Room Type	m ²	Occupancy	Number Of Rooms
Standard Twin	28m ²	2	80
Deluxe Twin	32m ²	2	117
Deluxe Twin + Extra Bed	32m ²	3	23
Club Twin	28m ²	2	22
Club Deluxe Twin	32m ²	2	38
Regency Suite Twin	56m ²	2	2
Regency Suite King	56m ²	2	3
Regency Executive Suite Twin	64m ²	2	7
Regency Executive Suite King	64m ²	2	2
Total			294 Rooms



03. ACCOMMODATION

All Rooms are equipped with

- Complimentary broadband Internet access (LAN and Wi-Fi)
- 40-inch LCD TV for Standard & Club / 55-inch LCD TV for Suite
- Sealy Box-Top mattress
- Satellite broadcasting
- Foreign Language Channels (English, Chinese, Korean)
- Complimentary Bottled mineral water
- Coffee machine
- Bath amenities and hairdryer
- Refrigerator (with no compressor)
- Safety box
- Pajamas



03. ACCOMMODATION

4F – 12F Standard Floor



STANDARD TWIN

- No of bed : 2
- Total area : 28m²
- Max Occupancy : 2adults + 2child (up to 12 years old)
- Bed Type & Size : Twin Beds / 122cm x 203cm
- Bathroom Type : Modular
- Interconnecting Options : No



DELUXE TWIN

- No of bed : 2
- Total area : 32m²
- Max Occupancy : 2adults + 2child (up to 12 years old)
- Bed Type & Size : Twin Beds / 122cm x 203cm
- Bathroom Type : Separate
- Interconnecting Options : Yes



DELUXE TWIN + EXTRA BED

- No of bed : 2
- Total area : 32m²
- Max Occupancy : 3adults + 2child (up to 12 years old)
- Bed Type & Size : Twin Beds + Extra Bed / 122cm x 203cm + 92cm x 203cm
- Bathroom Type : Separate
- Interconnecting Options : No

03. ACCOMMODATION

13F – 17F Club Floor



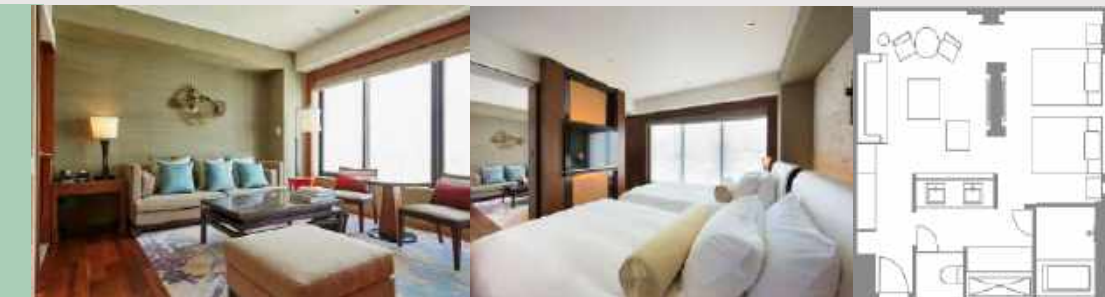
CLUB TWIN

- No of bed : 2
- Total area : 28m²
- Max Occupancy : 2adults + 2child (up to 12 years old)
- Bed Type & Size : Twin Beds / 122cm x 203cm
- Bathroom Type : Separate
- Interconnecting Options : No



CLUB DELUXE TWIN

- No of bed : 2
- Total area : 32m²
- Max Occupancy : 2adults + 2child (up to 12 years old)
- Bed Type & Size : Twin Beds / 122cm x 203cm
- Bathroom Type : Separate
- Interconnecting Options : Yes



REGENCY SUITE TWIN

- No of bed : 2
- Total area : 56m²
- Max Occupancy : 2adults + 2child (up to 12 years old)
- Bed Type & Size : Twin Beds / 142cm x 203cm
- Bathroom Type : Full bathroom with double sink
- Interconnecting Options : No

03. ACCOMMODATION

13F – 17F Club Floor



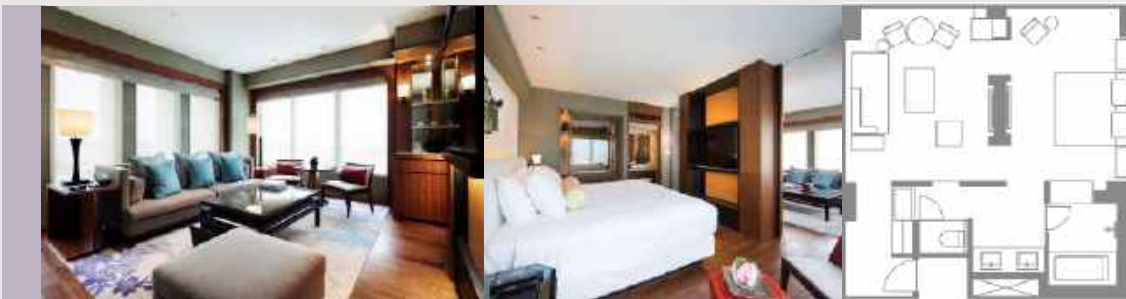
- No of bed : 1
- Total area : 56m²
- Max Occupancy : 2adults + 1child (up to 12 years old)
- Bed Type & Size : King Bed / 200cm x 203cm
- Bathroom Type : Full bathroom with double sink
- Interconnecting Options : No

REGENCY SUITE KING



- No of bed : 2
- Total area : 64m²
- Max Occupancy : 2adults + 2child (up to 12 years old)
- Bed Type & Size : Twin Beds / 142cm x 203cm
- Bathroom Type : Full bathroom with double sink
- Interconnecting Options : No

REGENCY EXECUTIVE SUITE TWIN



- No of bed : 1
- Total area : 64m²
- Max Occupancy : 2adults + 1child (up to 12 years old)
- Bed Type & Size : King Bed / 200cm x 203cm
- Bathroom Type : Full bathroom with double sink
- Interconnecting Options : No

REGENCY EXECUTIVE SUITE KING

04. REGENCY CLUB LOUNGE

18F Club Floor Exclusive Lounge



COCKTAIL TIME

- Hours : 7:00 – 22:00
- Breakfast : 7:00 – 10:00
- Teatime : 10:00 – 17:00 & 19:00 – 22:00
- Cocktail Time : 17:00 – 19:00
- Orion-Beer Server : 7:00 – 20:00

▪ Services

- Check-in / Check-out
- Concierge Service
- Evening Service
- Newspaper Delivery



BREAKFAST



TEATIME



COCKTAIL TIME



Roast Beef Carving Station



ORION BEER SERVER

05. RESTAURANT & BAR

4 Restaurants & Bar

LOBBY LOUNGE



- Location: 1F
- Hours
9:00 - 23:00 (L.O 22:00)
- Price : Coffee 880 JPY~, Cake 660 JPY~
- Capacity : 33 seats (Terrace +28seats)

the lounge

BAR



- Location: 18F
- Hours
18:00 - 25:00 (L.O 24:00)
- Price : Cocktails 1,400 JPY~
- Capacity : 48 seats (Terrace +14 seats)

the bar

05. RESTAURANT & BAR

4 Restaurants & Bar

BREAKFAST & LUNCH : BUFFET



- Location: 2F
- Hours
Breakfast: 7:00 - 10:00
Lunch 12:00 - 15:00 (L.O 14:30)
- Price : Breakfast Adults 2,200 JPY
7-12 years old 1,100 JPY
4-6 years old 660 JPY
- Capacity : 156 seats (Terrace +42 seats)



sakura*zaka

DINNER : ITALIAN FINE-DINING



- Location: 18F
- Hours
Dinner 17:30 - 23:00 (L.O 22:00)
- Price : Full Course 11,000 JPY~
- Capacity : 46 seats (Private dining +1 room)

MILANO
GRILL

06. HOTEL FACILITIES

Staying Guests Only



Fitness Center 3F

- Hours: 07:00 – 20:00
(Last Entry : 19:00)
- Open all year round
- Entrance limited to persons aged 16 and over.
- Rental wear & shoes available free of charge (Limited quantities available)



Pool 3F

- Hours: 09:00 – 20:00
(Last Entry : 19:00)
- Opening from Mar to Nov
- Outdoor pool with fresh water
- Dimensions : 15m×7m
- Depth : 1.1m & 50cm
- Swimming gear & equipment available free of charge (Limited quantities available)



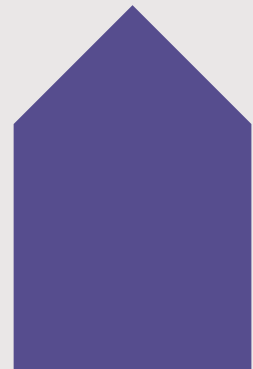
Jet Bath 3F

- Hours: 07:00 – 20:00
(Last Entry : 19:00)
- Open all year round
- Swimming gear & equipment available free of charge (Limited quantities available)



Shop 1F

- Hours: 24 - 7
Please contact Bell Desk
- Open all year round
- Items : Okinawa souvenir, Snacks, Wine, Drinks and so on.



07. MEETING & BANQUET

2F Meeting Room

Regency I · II



Boardroom	m ²	Length	Wide	Theater	Classroom	Hallow Square
Regency I · II	82m ²	11.2m	6.5m	56pax	36pax	36pax
Regency I	55m ²	7.5m	6.5m	32pax	18pax	24pax
Regency II	27m ²	3.7m	6.5m	16pax	9max	18pax

Celling height 2.7m

- Location: 2F
- Hours 09:00 - 22:00
- Price : 22,000 JPY per hour / from 2 hours use
- Including Items : Projector / screen / DVD / Blu-ray / Microphone / Wi-fi / Notepad / Pen / Whiteboard

07. MEETING & BANQUET

2F Restaurant Private Dinner

Restaurant sakurazaka



- Location : 2F 「sakurazaka」 restaurant
- Available hours : 2 hours from 17:00 to 21:00 PM.
- Food : Buffet style 5,500JPY per person
- Drink : all-you-can-drink 4,000JPY per person
: Beer, wine (red / white), awamori, soft drinks
(Inc tax and service charge)

Please be noted that the capacity would be a minimum of 30 pax to a maximum of 150 pax.



08. ACTIVITIES

Marine Activities with hotel Pick-up

Blue Cave Snorkel

- Price : Adult 7,000 JPY (including tax)
- Time Length : 4 hours

Parasailing

- Price : Adult 8,500 JPY (including tax)
- Time Length : 3 hours

Kerama Islands Diving

- Price : Adult 14,900 JPY (including tax)
- Time Length : 8 hours



08. ACTIVITIES

Local Activities you can explore

1MIN
ON FOOT



Try pottery making at Tsuboya Yachimun-dori

- Ikutouen Yachimun Dojo (ceramic workshop)
Address: 1-22-33 Tsuboya, Naha-shi, Okinawa
Website: <http://www.ikutouen.com/english>
Hours: Ceramic workshop 9am to 5:30pm (the hands-on session requires an appointment),
Shop 10:00am to 6:30pm
Closed: Open 7 days a week

3MIN
ON FOOT



Making a Ryukyu Glass, Bingata & Shuri weave at Naha City Traditional Arts and Crafts Center

- Naha City Traditional Arts and Crafts Center
Address: Tenbusu Naha 2F, 3-2-10 Makishi, Naha City
Website: <https://kogeikan.jp>
Hours : 9:00– 18:00
Closed: "Ryukyu glass (Thu), Ryukyu Bingata (Sun),
Shuri weave (Wed), Ryukyu lacquerware
(Please ask in advance)"



9. PRECAUTIONARY MEASURES

GBAC STAR

GBAC STAR is the gold standard of prepared facilities and GBAC STAR accreditation means that a facility or facility service provider has: Established and maintained a cleaning, disinfection, and infectious disease prevention program to minimize risks associated with infectious agents like the novel coronavirus (SARS-CoV-2).

As part of Hyatt's Global Care & Cleanliness Commitment, all Hyatt hotels achieved GBAC STAR to reinforce existing procedures with advanced cleaning, disinfection, and infectious disease prevention.





HYATT REGENCY™

NAHA OKINAWA



+81 098 866 8888



kozy.omija@hyatt.com
younhwa.chun@hyatt.com



[Hyatt.com](https://www.hyatt.com)